



EARLY HEAD START

FAMILY DEVELOPMENT CENTER

2022 ANNUAL REPORT

CONTENTS

1

- Letter from the Director

2

- About the Family Development Center

3

- Meet the Early Head Start Team
- Program Accomplishments
- Community Engagement

5

- Funding

6

- Percentage of Eligible Early Head Start Children served





LETTER FROM THE DIRECTOR



In 2021, the State of Illinois reported a 39.5% turnover rate for childcare teachers. Knowing that early childhood educators lay the foundational architecture for brain development, we requested a change in scope to our EHS grant for 2022 which would allow us to reduce the number of children served to increase teacher pay and benefits. We hope to increase teacher pay to attract and retain a highly motivated workforce for our most vulnerable students.

Erin Soto

Erin Soto
Executive Director
Family Development Center
Governors State University
Home of the Jr. Jaguars
“Here, you are Home”

ABOUT THE FAMILY DEVELOPMENT CENTER

MISSION

The mission of the Family Development Center (FDC), a division of Governors State University's College of Education, is to provide accessible and exceptional education for children, families and students and to encourage lifelong learning and the development of the whole child.

VISION

The Family Development Center will be the Model Early Education Center for the South Suburbs.

OUR PHILOSOPHY

We believe that children learn in many different ways and children's learning is impacted by a variety of forces. When children are actively engaged and construct their own knowledge through hands-on activities in a stimulating environment, their growth and development flourish. We use a research-based, reasoned eclecticism approach with Creative Curriculum as our play-based foundation. We honor diversity, creativity and joy in every experience and strive to provide security and emotional support for our children and families.

FACILITY

The Family Development Center is a Division of the College of Education at Governors State University and was originally established as a charter school in 2003.

The building, nested on campus among native prairie flowers and GSU's esteemed Sculpture Park, is a state-of-the-art facility whose architectural design earned it a position as a Merit Award Finalist from the Chicago Building Congress.

The FDC serves up to 181 children with a \$2.8 M budget, ranking it in the top 15 in budget and size of programs in the country and one of the largest in the state of Illinois. Over this fiscal year, 220 children were served in our program by a total of 50 staff members.

PROGRAMS

The Family Development Center is designed to serve the needs of the surrounding community as well as university constituents. The FDC offers full-time care for children aged 12 years of age. In addition to center-based educational care, curriculum and support services are offered to pregnant women and home-

based services are provided to families with children up to age two.

Family Development Center programs are supported by grants, donations and private tuition payments from parents. FDC is funded by three major grants: Early Head Start, Preschool for All, and Preschool Expansion.

Early Head Start is a year-round, federally funded program that provides comprehensive education and family support to low-income pregnant women and families with children age birth to three. This program provides 6 hours of center-based care in addition to home-based services with a focus on high-quality comprehensive services to support the whole family. Funding serves 50 children in our center-based program, and 22 in our home-based programs.

At age three, our children may transition to our full day 10-month Preschool for All classrooms or Preschool for All Expansion classrooms. The goal of the Preschool for All program is to provide educational services to all 3- to 5-year-old and focuses on providing high-quality educational programs for children who are determined to be at risk of academic failure. We are funded for 94 children in this program. |

Our full-day PreK options blend Preschool For All or Early Head Start grant funding with parent's tuition or state Child Care Assistance Payments to provide wrap around care for 11 hours of high-quality education and care for families that are working or in school full time.

When children turn five, they transition to Kindergarten in their local school districts. The Family Development Center continues to offer before-and-after childcare during the school year for children enrolled in Crete-Monee School District 201-U.

We also offer full day summer camp open for 3-8-year-olds in the summer.

All center-based programs are licensed by the State of Illinois Department of Children and Family Services (DCFS) and are accredited by the National Association for the Education of Young Children (NAEYC). We are also an ExceleRate Gold Level program.

Proud to be in the
Gold Circle of Quality



MEET THE EARLY HEAD START TEAM

LEADERSHIP:

Executive Director: Erin Soto
Family Service Director: Jillian Roth
Health, Safety, and Nutrition Services: Claudia Nguyen
Education, Disabilities and Mental Health Services: Dorothy Bertram
Center Director: Barb Calibraro
Business Manager: Sharon Palmer

POLICY COUNCIL:

Chair: Rebekah Johnson
Vice Chair: Olivia Hopson
Secretary: Laura Vazquez

GOVERNING GROUP:

Chair: Shannon Dermer PH.D
Vice Chair: Natalia Ermasova, PH.D
Secretary: Janet Brewer, J.D., Psy, D.
Kelly Chesta, Director, Crete-Monee Early Learning Center

PROGRAM ACCOMPLISHMENTS

FAMILY SUCCESS CORNER:

Kathleen Condon– Center Based Program
“I highly recommend the FDC! The staff is absolutely wonderful and they care about the kids like they’re own! I have 3 kiddos attending and the care they receive is beyond phenomenal! My middle child has a developmental delay and history of febrile seizures. I fully trust the staff there and her teachers to take care of her. We worked together to

set up a plan for her seizures and I found out that the teachers in her room have had training by the epilepsy foundation. They also helped me get early intervention for her and she qualified for all therapy services. They have also worked with therapist and myself to have her therapy sessions during her days spent at daycare! I couldn’t be any happier with the choice to send my kids here for daycare and preschool!”

COMMUNITY ENGAGEMENT

HEALTH ADVISORY COMMITTEE

Special thanks to the following members of the Health Advisory Committee for their time and input on health data, self-assessment, under-enrollment and recruitment efforts:

- **Kathleen Lynch-Hale** – Early Learning Center
- **Caren Schranz** – GSU Occupational Therapy Dept
- **Linda Paschall** – FDC Nurse Advisor
- **Georgia VanderBoegh** – Will County Health Department
- **Gia Washington** – Sertoma
- **Pat Krause** – Will County WIC
- **Rebecca Deang** – Will County Health Department Community Health Educator AOK Network
- **Patrick McCarthy** – Will County Immunizations
- **Elaine Reyna** – GSU Communication Disorders Dept

GSU EHS has Memorandum of Agreements with the following agencies:

Social Service:

- Anew: Building Beyond Violence and Abuse (formerly South Suburban Family Shelter)
- Catholic Charities of Joliet
- Grand Prairie Services
- Howard Intervention Services
- Illinois Action for Children
- Illinois Network of Child Care Resource & Referral Agencies
- Morning Star Mission
- Park Forest Public Library
- Prairie State Legal Services
- Respond Now
- University Park Library
- Village of University Park
- Workforce Services Division of Will County

Health:

- Sertoma Centre, Inc.
- The Heart That Smiles Dental Clinic and Mobile Unit



- Will County Community Health Center
- Will County Health Department
- Will County- WIC

Education/Disabilities:

- Child and Family Connections #12
- Child and Family Connections #15
- Crete-Monee Early Learning Center
- Crete-Monee High School
- Steger School District 194

COMMUNITY PARTNER SUCCESS STORY

Oral Health Services: The Heart that Smiles Mobile Unit visited the Family Development center in March 2022 and July 2022. During the two visits, FDC children were seen by the dental hygienist. Of those 22 children, 8 children were from our Early Head Start program.

Supplemental Speech Services: The collaboration with the University's Communication Disorders Department grew by having GSU Master Level students and their instructor provide supplemental speech services to enrolled children. The program identified preschool children to initiate the services and will expand to EHS enrolled children in the Fall 2022. Children who were identified showed a need for speech services through screenings, teacher assessments and parent concerns.



FUNDING

TOTAL OPERATING BUDGET

FY22 FUNDING	
PROGRAM	TOTAL FUNDING
Early Head Start (January-December)	\$1,012,172
EHS COVID 19 One-Time Supplement	\$26,282
EHS COVID 19 - ARP	\$76,561
Non Federal Share	\$0
US Department of Agriculture Child & Adult Care Food Program Reimbursement (July-June)	\$82,670
INCCRRA Child Care Restoration Grant	\$227,700
Child Care Workforce Bonus	\$51,462
Illinois Department of Human Services Child Care Subsidies (July-June)	\$462,914.52
ISBE Preschool for All (July-June)	\$59,807
ISBE Preschool Expansion (July-June)	\$340,016
TOTAL OPERATING BUDGET	\$2,339,587

EHS BUDGET		
	BUDGETED	ACTUAL
Early Head Start		
Personnel Salaries	\$667,649	\$582,856
Fringe Benefits	\$330,286	\$289,993
Travel	\$1,963	\$1,709
Equipment	\$0	\$0
Supplies	\$16,563	\$37,101
Other	\$55,454	\$55,257
Indirect Costs	\$51,741	\$45,256
Total	\$1,123,656	\$1,012,172
Food Program income	\$82,670	\$82,670

DEMOGRAPHIC BREAKDOWN OF FAMILIES AND CHILDREN

Single parent	Foster parent	Homeless	Two-Parent
84	1	5	11

Bi-racial	African American	Caucasian	Asian	Hispanic	Other
13	63	12	0	11	2

WIC	Food Stamps	Cumulative Number of Children Served	Early Head Start
67	89		101

ACTUAL EARLY HEAD START AVERAGE MONTHLY ENROLLMENT

QUARTER 1	QUARTER 2	QUARTER 3	QUARTER 4
Jan – 50	April – 50	July – 47	Oct – 51
Feb – 56	May – 49	Aug – 46	Nov – 49
March – 50	June – 48	Sept – 52	Dec – 45

626 / 864 =72% Average Monthly Attendance



PERCENTAGE OF ELIGIBLE EARLY HEAD START CHILDREN SERVED

According to latest IECAM data available, there were a total of 1,309 children under age three in the GSUEHS service delivery area. Of these children, 52 met poverty guidelines. GSUEHS served 101 children or 100% of

eligible children in the service delivery area.

Number of Children with Disabilities:
Early Head Start: 8

INDICATOR	2022 DATA
Children with health insurance at end of year	100%
Number of children with an ongoing source of health care at the end of the year	99%
Number of children who are up to date on a schedule of age appropriate preventive and well-baby care according to Illinois EPSDT schedule	97%
Number of children who are up to date on all immunizations/all possible immunizations	100%

PREPARATION FOR KINDERGARTEN READINESS

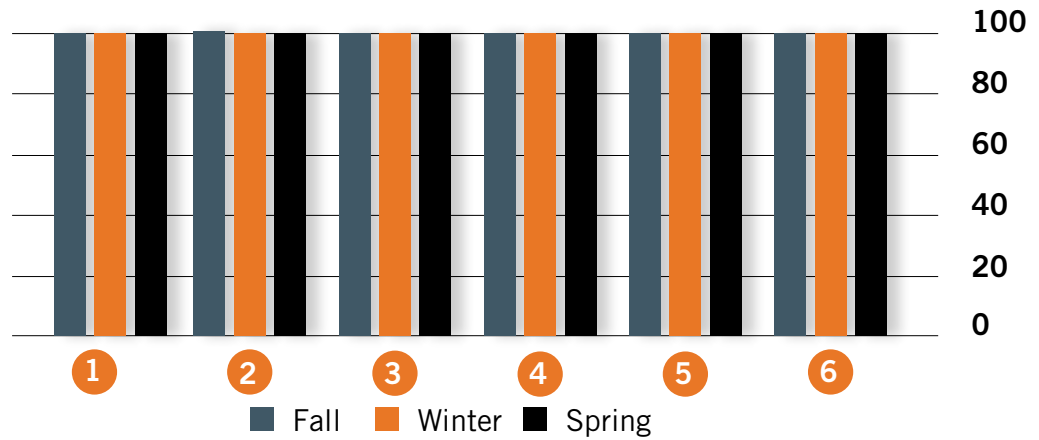
2021-2022 Early Head Start School Readiness Outcomes Data

FDC uses Teaching Strategies Gold as its formal child assessment system. Observations are recorded into the system and children's levels of development are assessed and compared to widely held expectations for their age group. Assessments are held three times a year in the Fall, Winter and Spring, called checkpoints. The following data represents children

who attended for all three checkpoints. A goal for EHS is that 80% of children enrolled will meet or exceed widely held expectations by the end of the program year. For children ages 0-1 this generally means that they are meeting their developmental milestones. At age two, more emphasis is on literacy and mathematical skills. 100% of the children in this report met the 80% benchmark by the end of the program year.

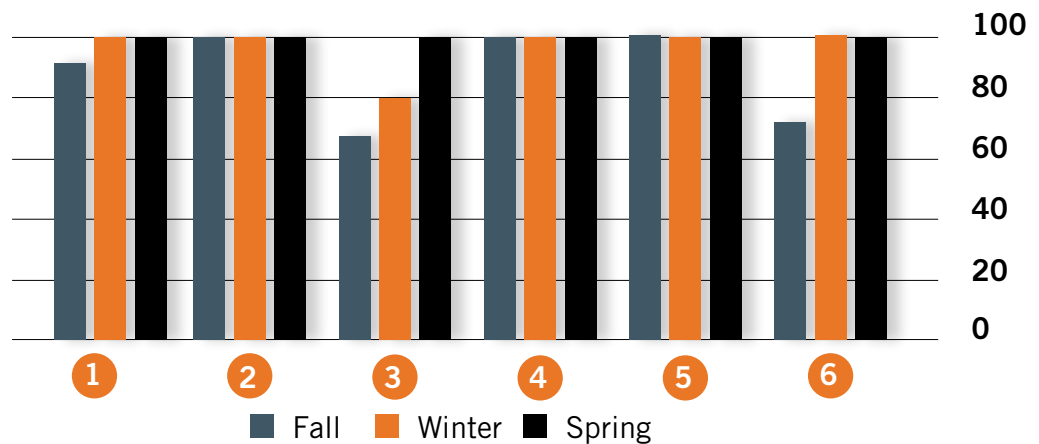
COMPARATIVE OUTCOMES REPORT 0 - 1 YEARS

1	Self-Emotional	100	100	100
2	Physical	100	100	100
3	Language	100	100	100
4	Cognitive	100	100	100
5	Literacy	100	100	100
6	Mathematics	100	100	100



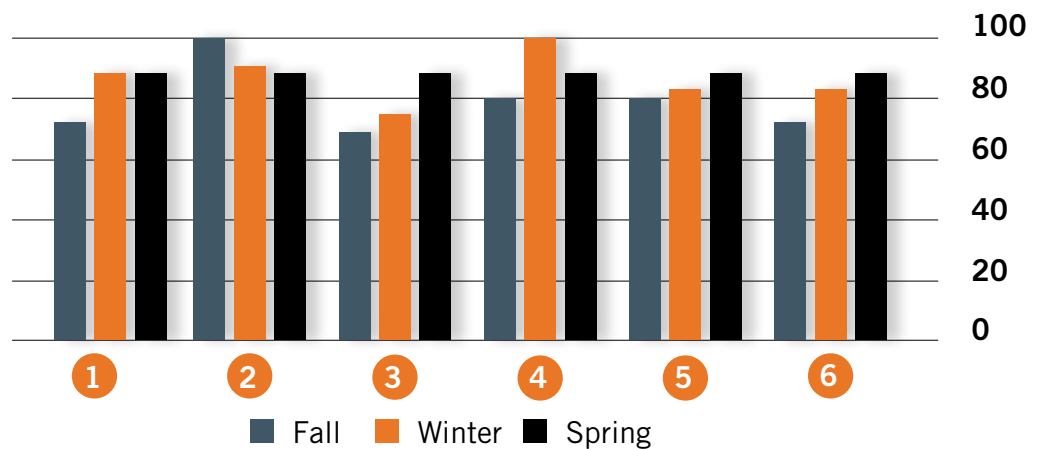
COMPARATIVE OUTCOMES REPORT 1 - 2 YEARS

1	Self-Emotional	93.3	100	100
2	Physical	100	100	100
3	Language	66.7	80	100
4	Cognitive	100	100	100
5	Literacy	100	100	100
6	Mathematics	73.3	100	100



COMPARATIVE OUTCOMES REPORT 2 - 3 YEARS

1	Self-Emotional	73	88	88
2	Physical	100	91	88
3	Language	67	75	88
4	Cognitive	80	100	88
5	Literacy	80	83	88
6	Mathematics	73	83	88



AUDIT INFORMATION

- GSU EHS received a FA1 Monitoring Review in 2020. The result of the review was that GSU EHS was out of compliance due to under-enrollment. Copies of the Compliance and Financial Audit Reports can be found on the Illinois General Auditor Page: <https://www.auditor.illinois.gov/Audit-Reports/GOVERNORS-STATE-UNIVERSITY.asp> EHS received no findings in FY22



Governors State
UNIVERSITY