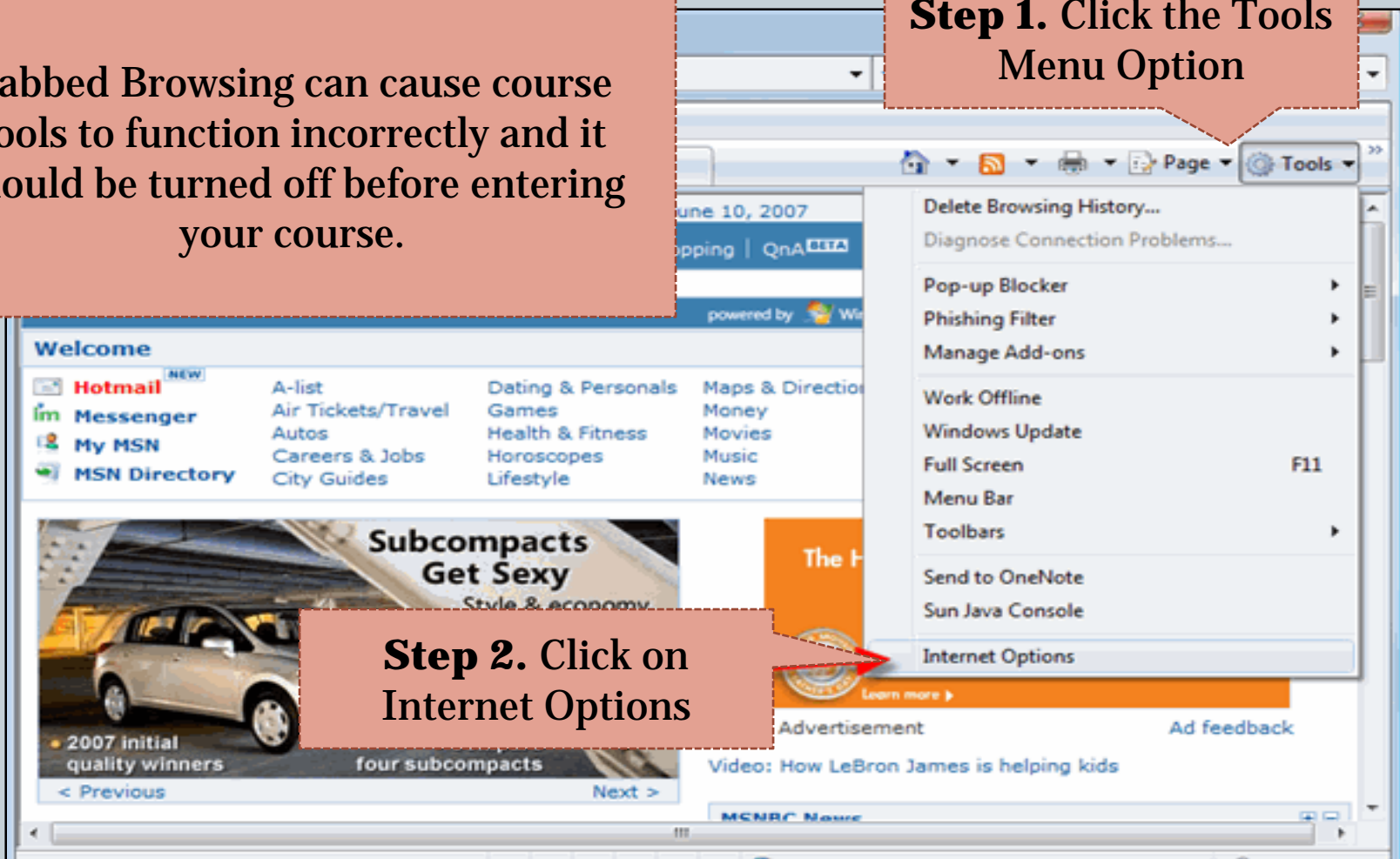


Turn off Tabbed Browsing

Tabbed Browsing can cause course tools to function incorrectly and it should be turned off before entering your course.

Step 1. Click the Tools Menu Option

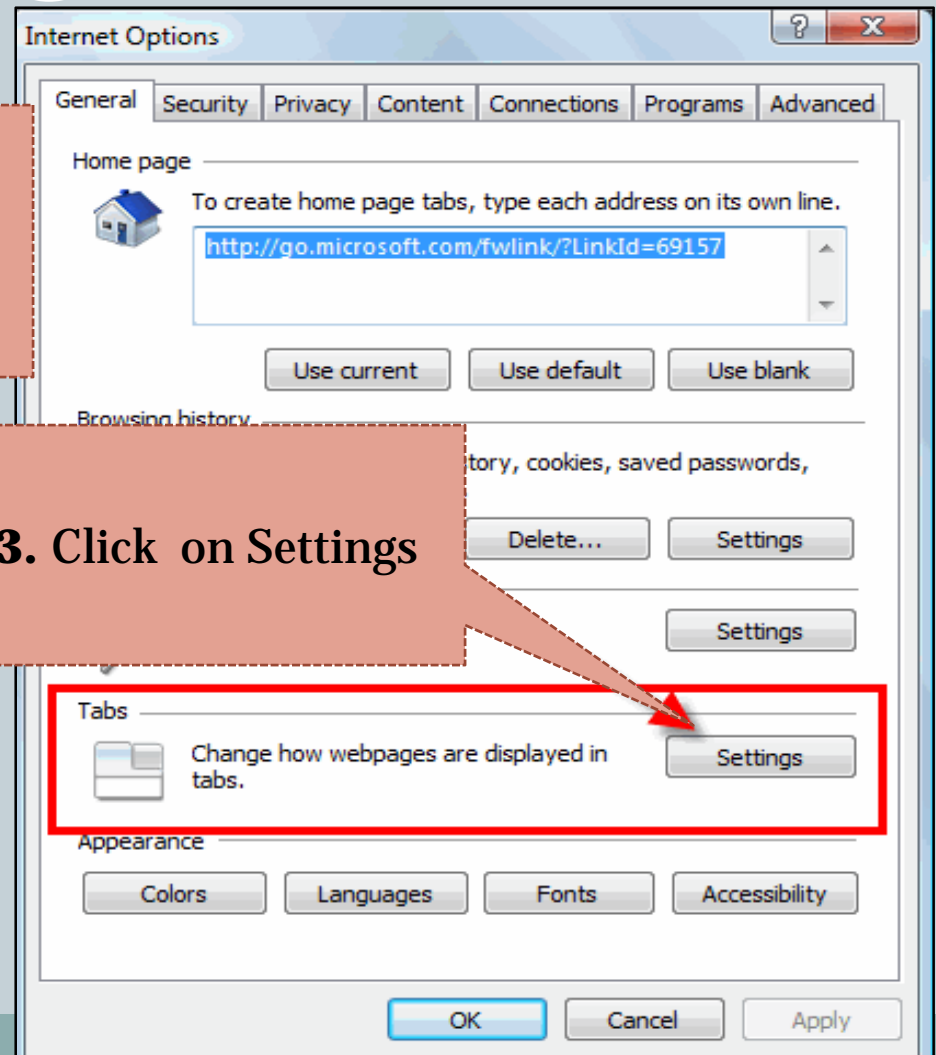
Step 2. Click on Internet Options



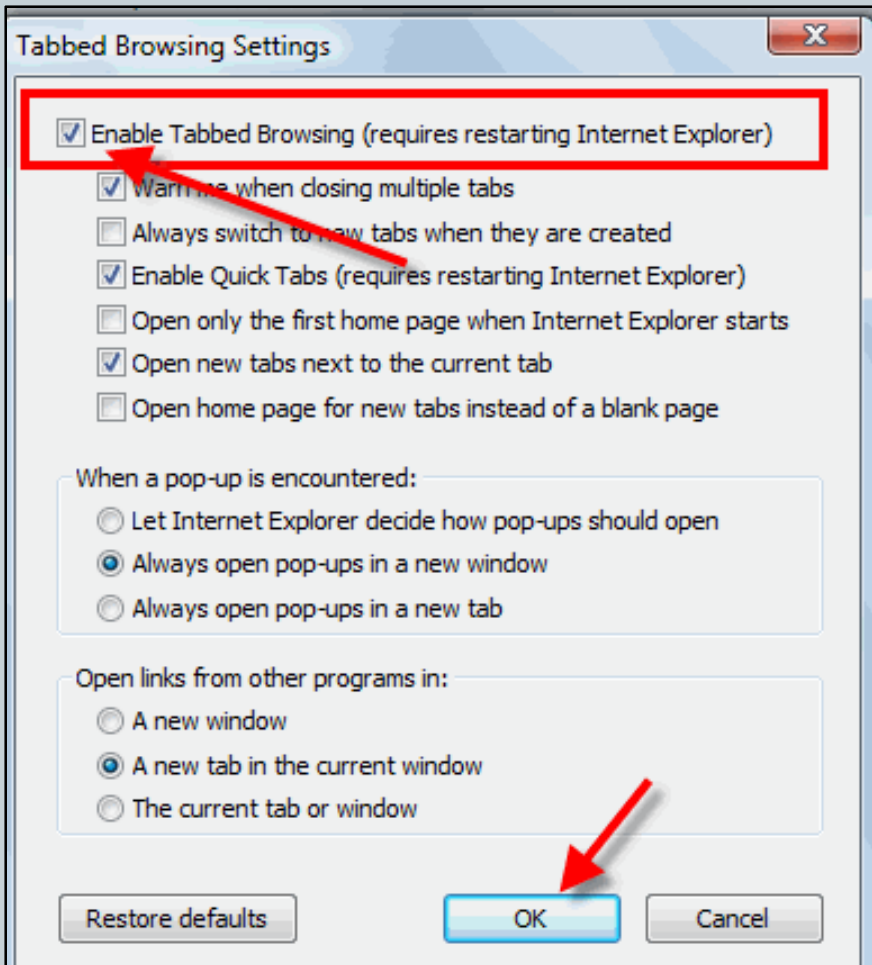
Turn off Tabbed Browsing

Locate the Tabs Header

Step 3. Click on Settings



Turn off Tabbed Browsing



Step 4. Uncheck “Enable Tabbed Browsing”.

Step 5. Click OK to complete and restart browser.