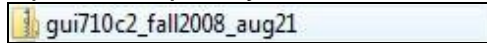


Downloading & Installing the SAP GUI Software on your Laptop or Home Computer

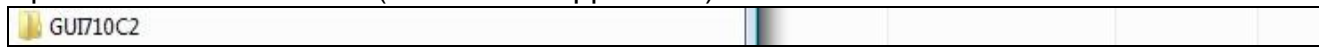
1. Click on the URL: [https://pantherfile.uwm.edu/xythoswfs/webui/\\_xy-14649710\\_1-t\\_NHknLpjy](https://pantherfile.uwm.edu/xythoswfs/webui/_xy-14649710_1-t_NHknLpjy) and save to save the software to your computer.

2. Open the zip file you downloaded, labeled: **gui710c2\_fall2008\_aug21**



3. Click **extract all files** to Unzip the files.

4. Open the extracted folder (without the zipper icon) labeled GUI710C2



5. Double-click the **UWMUccGuiInstall** file to begin installation

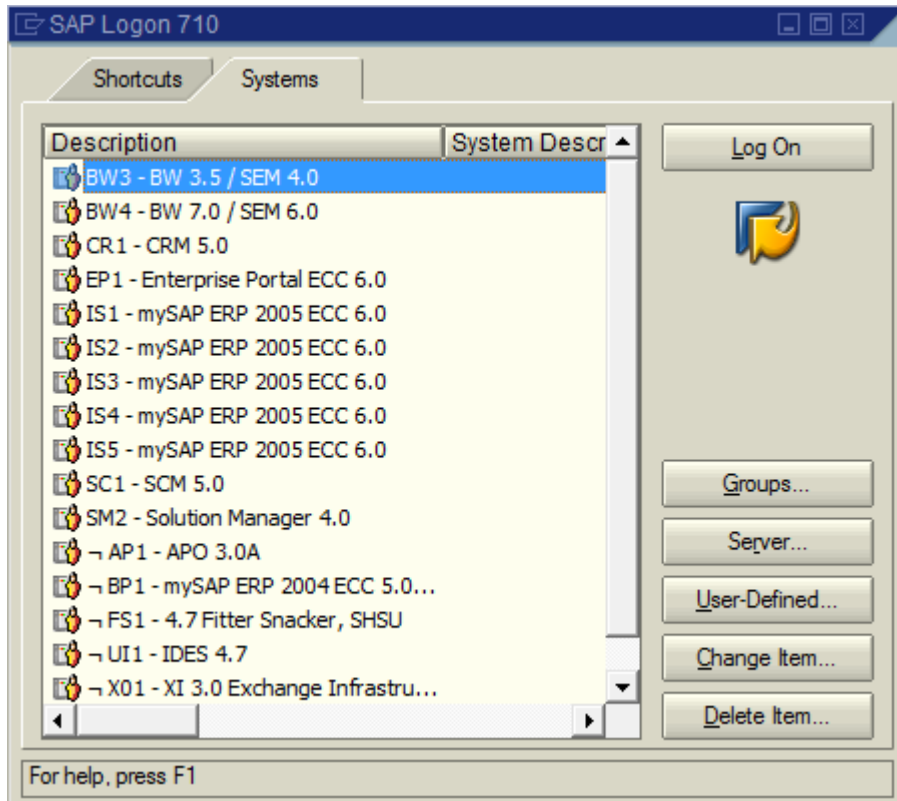


6. Click the SAPSetup – follow installation instructions. Include all options and check all boxes to install all features of the software.

7. If you are prompted to copy the saplogon.ini, choose YES

8. Once installed, you may access the SAP GUI by clicking on Start Menu → All Program → SAP Front End → **SAP Logon**

9. The **SAP Logon 710** window opens



Use the logon instructions to logon to the appropriate system for your class.